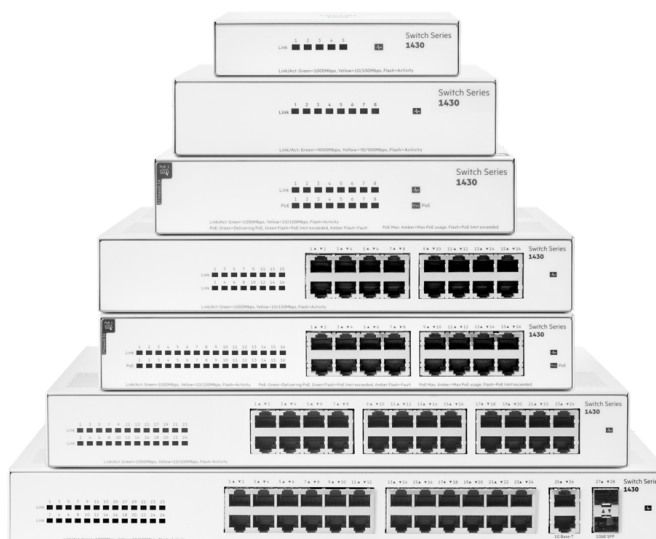


HPE Networking Instant On Switch 1430



What's new

- Unmanaged Layer 2 Gigabit Ethernet switch series ready to deploy in 5-, 8-, 16-, 24- and 26-port non-PoE and PoE models.
- No configuration or management needed.
- Plug-and-play with fully automated functions and zero ongoing maintenance.
- Up to 124W of PoE to power APs, IP Phones, and other IoT devices.
- Fan-less design for silent deployment in office spaces.

Overview

The HPE Networking Instant On Switch 1430 is a plug-and-play unmanaged switch series for small businesses looking for simple, reliable, and low-cost network connectivity. These easy-to-use switches deliver Layer 2 Gigabit Ethernet switching capabilities—at an affordable price point—to help connect and share common resources like printers and access points, without any complicated network configuration. With plug-and-play operation, fully automated functions, zero ongoing maintenance, and Power over Ethernet (PoE) models, these switches deliver simple, reliable connectivity for the smallest SMBs and home offices.

Features

Unmanaged Ethernet Connectivity for Small Businesses

The HPE Networking Instant On Switch 1430 is an unmanaged Layer 2 Gigabit Ethernet switch series ready to deploy in seven models in PoE and non-PoE configurations: one 5-port, two 8-port, two 16-port, one 24-port, and one 26-port model with 2 SFP uplinks models.

With PoE models, you get up to 30W PoE per port power delivery for Class 4 PoE devices like access points, surveillance cameras and VoIP phones. The 8-port and 16-port PoE models come with the power budget of 64W and 124W respectively to support the latest IoT devices.

Two dedicated 1 G SFP fiber ports on the 26-port model can be used for uplinks and to support long distance connectivity using fiber transceivers, for a total of 28 Ethernet ports.

Plug-and-Play Operation

The HPE Networking Instant On Switch 1430 models are easy to use with zero configuration and no required ongoing administration.

The unmanaged PoE models delivers fully automated support for powering compatible IP phones, video surveillance cameras, or wireless access points.

No configuration beyond installation of optional 1 GbE SFP transceivers on 26-port model to extend connectivity with gigabit fiber.

Install flexibility with support for table-top, under-table, wall-mount, and rack-mount options (varies per model).

Simplified cabling automatically adjusts for straight-through or crossover cables on all 10/100/1000 ports using Auto MDI/MDI-X.

Energy Efficiency and Traffic Optimization

The HPE Networking Instant On Switch 1430 series supports Energy Efficient Ethernet (EEE) and is compliant with 802.3az standard requirements to save energy during periods of low data activity.

All models are fan-less for silent operation in office settings or acoustically sensitive environments and require less power to operate.

Quality of Service provides priority of time-sensitive packets (like VoIP and video) over other traffic based on DSCP or IEEE 802.1p classification.

Jumbo frame support provides up to 9216 bytes frame size to improve the performance of large data transfers.

Flow control provides a flow-throttling mechanism propagated through the network to prevent packet loss at a congested node.



Technical specifications

HPE Networking Instant On Switch 1430

| | |
|-----------------------------|-------------------------------------------------------------------------------------------------------------------|
| Ports | 26 10/100/1000 RJ-45 ports, 2 SFP 1GbE ports maximum, depending on model. PoE/PoE+ available on select models. |
| Memory and processor | 32Mb Flash, Packet buffer size: 12.0 Mb maximum, depending on model |
| Throughput | 38.69 Mpps maximum, depending on model |
| Switching capacity | 56 Gbps maximum, depending on model |
| PoE capability | 124W maximum, depending on model |
| Management features | Unmanaged |
| Input voltage | 100-127VAC / 200-240VAC, depending on model |
| Operating temperature | 0°C to 40°C, 32°F to 104°F |
| Power consumption | 14.7W maximum, depending on model |
| Product dimensions (metric) | 22.5 x 38.8 x 4.40 cm |
| Weight | 2.3 kg, maximum, depending on model |



For additional technical information, available models and options, please reference the [QuickSpecs](#)

HPE Aruba Networking Services

HPE Aruba Networking services simplify and accelerate the network technology lifecycle, enabling your network to scale with better predictability and cost-effectiveness. Whether you operate your own network and need to improve your IT efficiencies, or you want to offload some of the burden, we have the services you need to reach your goals.

Learn more about what HPE Services - Aruba Networking has to offer at: <https://www.hpe.com/edge/services>

Support Services

Our support portfolio provides the essential support elements as well as proactive and preventive features to help you improve your team's productivity and get the most from your network. Our support customers benefit from faster issue resolution, simplified operations and efficiencies, and reduced network issues.

Professional Services

With deep intellectual capital and purpose-built tools, our team delivers a range of standard and custom professional services designed to accelerate your value from HPE Aruba Networking technology.

Project based services include: Annual subscription services include:

- Planning, audit, and assessment
- Architecture review and design
- Deployment, migration, and knowledge transfer
- Network optimization
- Intelligent Operations
- Customer Experience Management

Our [Education Services](#) allow your team to come up to speed quickly.

HPE GreenLake for Networking

Our NaaS solution, is part of the HPE GreenLake services family, and simplifies network operations, accelerates equipment handling, and increases the value of your HPE Aruba Networking solution. If you need expert guidance and automation-based operations for your team, please explore our NaaS approach through HPE GreenLake for Networking.

Explore **HPE GreenLake**



Make the right purchase decision.
Contact our presales specialists.



Contact us